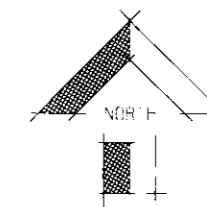


SIDES Metres	ANGLES OF DIRECTION	CO-ORDINATES Y System WG 19° X	
		Y	X
	Constants	0,00	3 700 000,00
AB	60,90	269 17 40	A +43 252,39 +40 614,59
BC	14,00	359 17 40	B +43 191,50 +40 613,84
CD	45,00	269 17 40	C +43 191,33 +40 627,84
DE	33,00	179 17 40	D +43 146,33 +40 627,28
EF	40,42	269 17 40	E +43 146,73 +40 594,29
FG	3,15	354 09 20	F +43 106,32 +40 593,79
GH	19,00	264 09 20	G +43 106,00 +40 596,93
HJ	220,20	354 09 20	H +43 087,10 +40 594,99
JK	199,36	91 18 20	J +43 064,68 +40 814,04
KL	101,01	157 29 50	K +43 263,98 +40 809,50
LM	27,37	269 17 40	L +43 302,64 +40 716,19
MN	44,00	179 17 40	M +43 275,27 +40 715,85
NP	30,00	269 17 40	N +43 275,81 +40 671,85
PQ	16,00	179 17 40	P +43 245,81 +40 671,48
QR	5,88	89 17 40	Q +43 246,01 +40 655,49
RA	40,97	179 17 40	R +43 251,89 +40 655,56
	10 DC7	○	+41 568,51 +42 117,46
	11 DC7	⊖	+40 763,37 +42 202,56

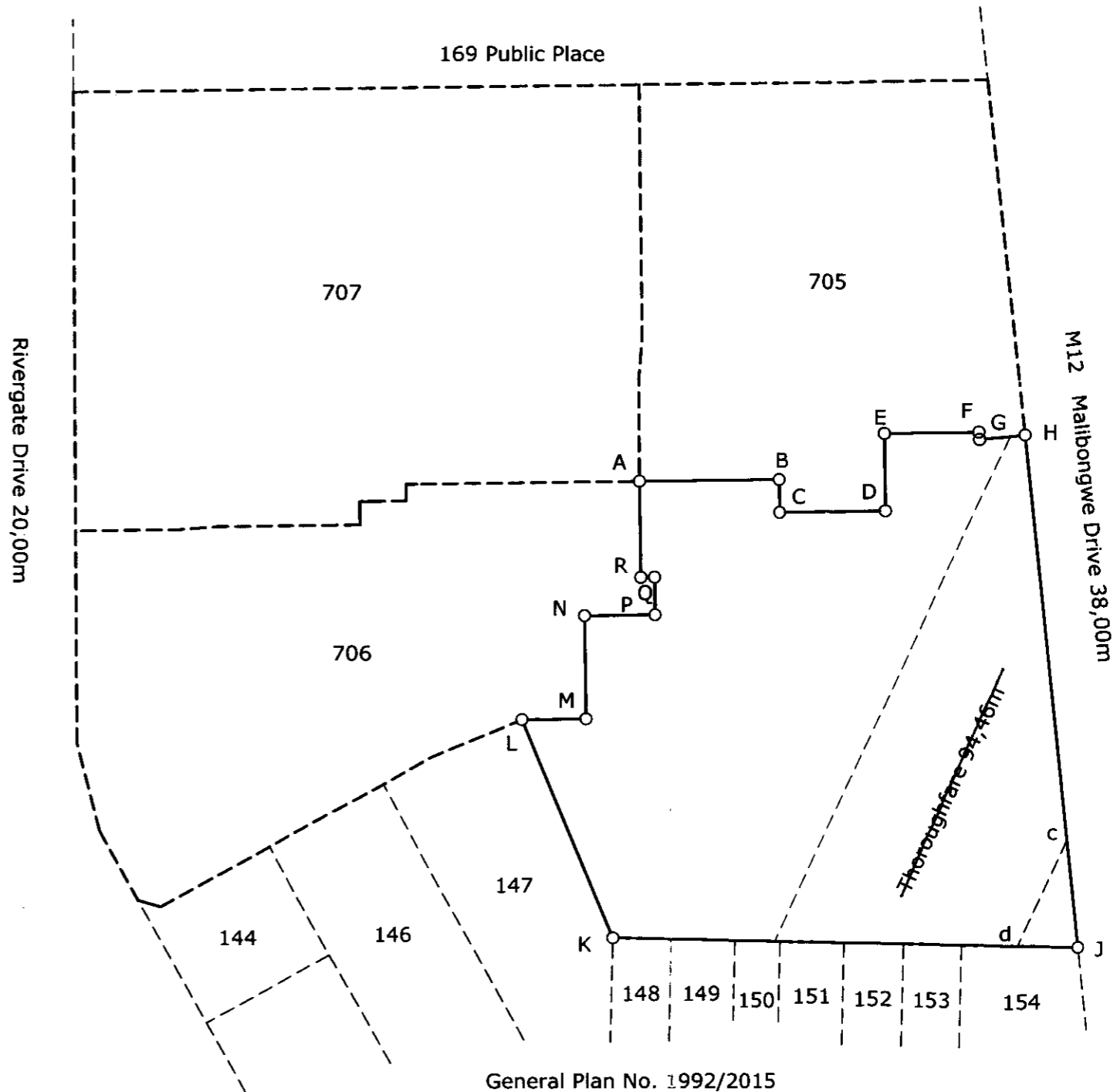
**Beacon Description:**  
All 12mm iron peg



S.G. No.  
818/2019  
Approved  
*[Signature]*  
for Surveyor-General  
2019.05.13

FOR SUBDIVISION OF THIS  
PROPERTY VIDE GENERAL  
PLAN.....822/2019.....  
.....  
.....

Thoroughfare deleted  
File: Cape 224 V4 page 36  
02-07-2019  
fo. Surveyor-General



Scale 1: 2500  
The figure A B C D E F G H J K L M N P Q R  
represents 3,9454 Hectares of land, being

**Erf 704, portion of Erf 184 Rivergate**

Situate in the City of Cape Town Province of the Western Cape  
Administrative District of Cape  
Surveyed in November 2008 - March 2019  
by me *R. C. Abrahamse*  
R. C. Abrahamse (PLS 0002) Professional Land Surveyor

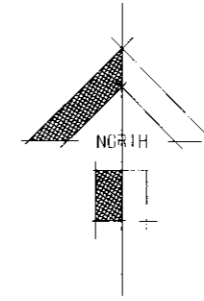
APPROVED SUBJECT TO SIMUL-  
TANEOUS REGISTRATION OF  
DIAGRAM.....GP.822/2019.....  
BEING.....

This diagram is annexed to No. dated i.f.o.	The original diagram is SG. No. 2809/2017 annexed to C.C.T. 2018 - - 3512	File No. Cape 224 S.R. No. 513/2019 Comp. BH-8AAC(6201)
Registrar of Deeds		LPI C0160083

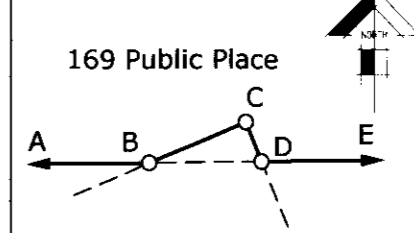
david hellig & abrahamse  
professional land surveyors ref L12172

SIDES Metres	ANGLES OF DIRECTION	CO-ORDINATES		
		Y System	WG 19°	X
	Constants		0,00	3 700 000,00
AB	108,47	A	+43 252,47	+40 445,57
BC	1,30	B	+43 144,01	+40 444,24
CD	0,52	C	+43 142,81	+40 443,74
DE	40,04	D	+43 142,61	+40 444,22
EF	152,05	E	+43 102,58	+40 443,73
FG	19,00	F	+43 087,10	+40 594,99
GH	3,15	G	+43 106,00	+40 596,93
HJ	40,42	H	+43 106,32	+40 593,79
JK	33,00	J	+43 146,73	+40 594,29
KL	45,00	K	+43 146,33	+40 627,28
LM	14,00	L	+43 191,33	+40 627,84
MN	60,90	M	+43 191,50	+40 613,84
NP	41,00	N	+43 252,39	+40 614,59
PQ	20,10	P	+43 252,90	+40 573,59
QA	108,00	Q	+43 251,14	+40 553,57
	10 DC7	⊕	+41 568,51	+42 117,46
	11 DC7	⊕	+40 763,37	+42 202,56

**Beacon Description:**  
All 12mm iron peg



Inset : no scale



S.G. No.  
819/2019  
Approved  
*[Signature]*  
for Surveyor-General  
2019. 05. 13

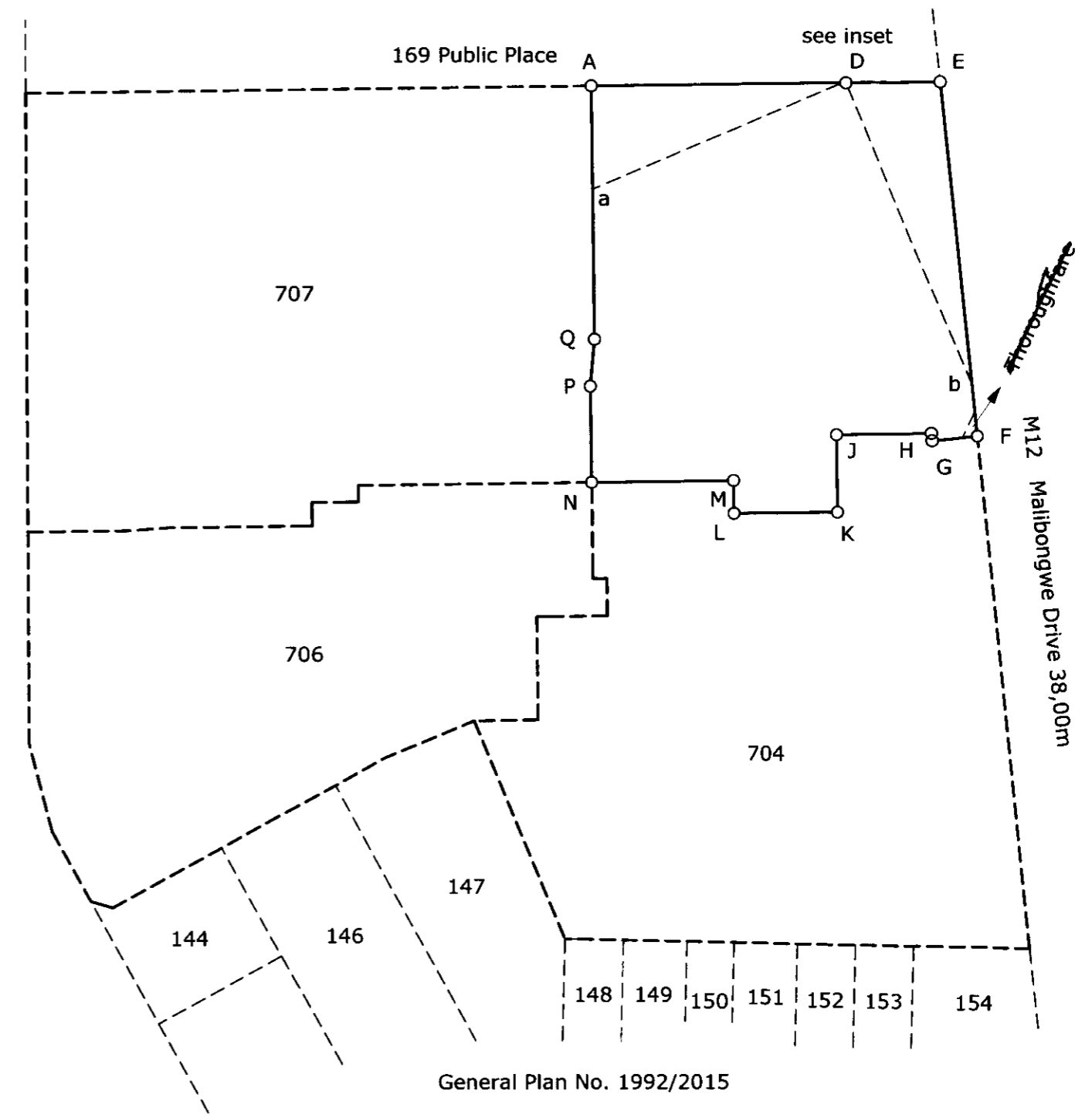
**Servitude Note:**

- The figure B C D represents an electric power line servitude area vide General Plan No. 1169/2017

THOROUGHFARE DELETED  
FILE: CAPE 224 V4 PAGE 36  
02-07-19  
for SURVEYOR-GENERAL

FOR SUBDIVISION OF THIS  
PROPERTY VIDE GENERAL  
PLAN..... 823/2019.....  
.....  
.....

Rivergate Drive 20,00m



Scale 1: 2500

The figure A B C D E F G H J K L M N P Q represents 2,6248 Hectares of land, being

**Erf 705, portion of Erf 184 Rivergate**

Situate in the City of Cape Town Province of the Western Cape  
Administrative District of Cape  
Surveyed in November 2008 - March 2019  
by me *[Signature]*  
R. C. Abrahamse (PLS 0002) Professional Land Surveyor

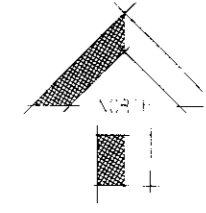
This diagram is annexed to No. dated i.f.o.	The original diagram is SG. No. 2809/2017 annexed to C.C.T. 2018 - - 3512	File No. Cape 224 S.R. No. 513/2019 Comp. BH-8AAC(6201)
Registrar of Deeds		LPI C0160083

APPROVED SUBJECT TO SIMULTANEOUS REGISTRATION OF DIAGRAM GP 823/2019 BEING.....

General Plan No. 1992/2015

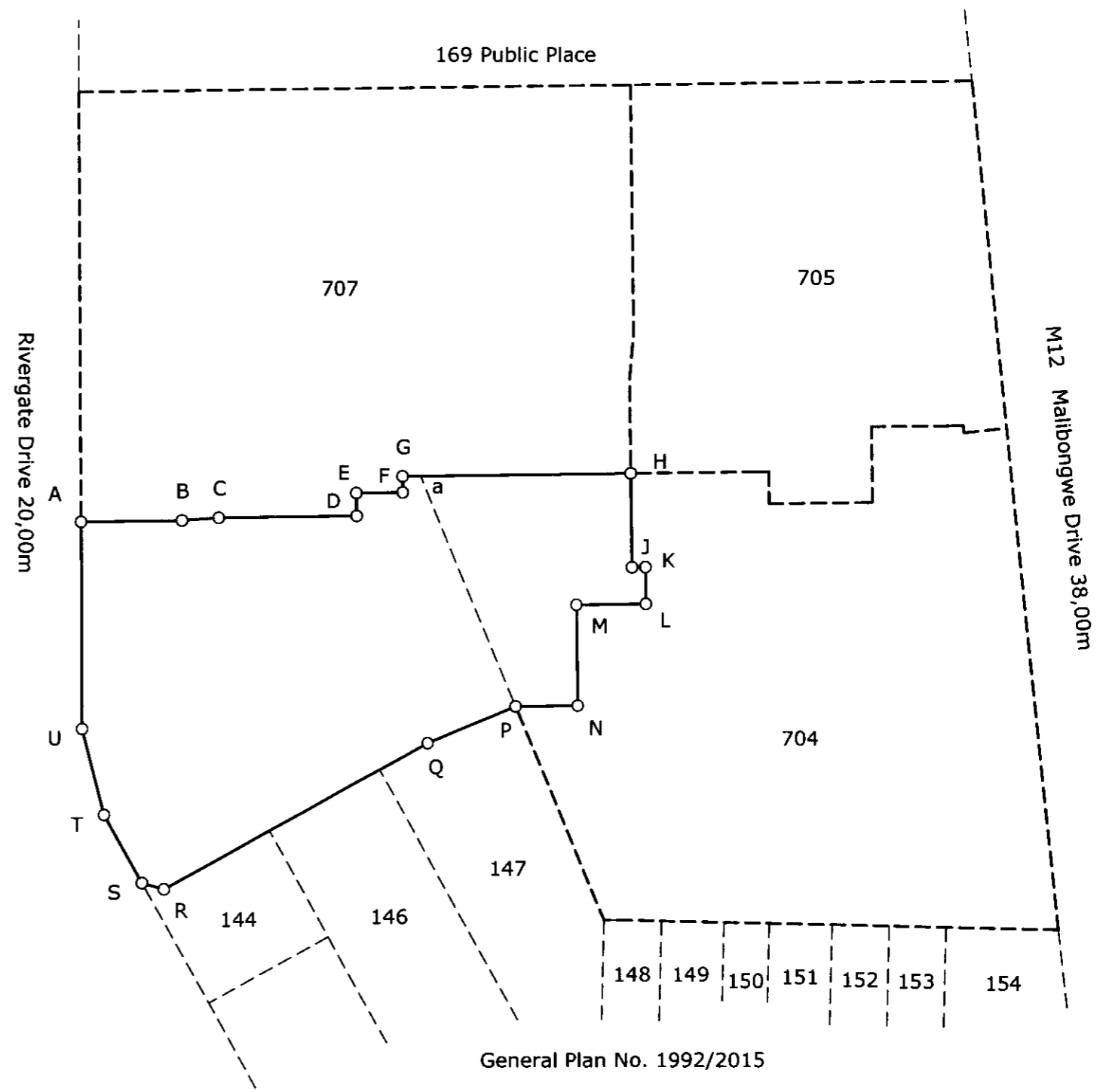
SIDES Metres	ANGLES OF DIRECTION	CO-ORDINATES		
		Y	System	X
	Constants	0,00	3 700 000,00	
AB	44,20	269 17 40	A	+43 493,23 +40 635,55
BC	16,03	265 43 10	B	+43 449,03 +40 635,01
CD	60,90	269 17 40	C	+43 433,05 +40 633,81
DE	10,00	179 17 40	D	+43 372,15 +40 633,06
EF	20,00	269 17 40	E	+43 372,27 +40 623,06
FG	7,00	179 17 40	F	+43 352,27 +40 622,82
GH	99,98	269 17 40	G	+43 352,36 +40 615,82
HJ	40,97	359 17 40	H	+43 252,39 +40 614,59
JK	5,88	269 17 40	J	+43 251,89 +40 655,56
KL	16,00	359 17 40	K	+43 246,01 +40 655,49
LM	30,00	89 17 40	L	+43 245,81 +40 671,48
MN	44,00	359 17 40	M	+43 275,81 +40 671,85
NP	27,37	89 17 40	N	+43 275,27 +40 715,85
PQ	41,84	67 30 20	P	+43 302,64 +40 716,19
QR	132,32	61 08 30	Q	+43 341,29 +40 732,19
RS	9,90	106 08 30	R	+43 457,18 +40 796,06
ST	34,01	151 08 30	S	+43 466,69 +40 793,31
TU	38,86	165 28 30	T	+43 483,11 +40 763,53
UA	90,36	179 45 20	U	+43 492,85 +40 725,91
	10 DC7	⊕		+41 568,51 +42 117,46
	11 DC7	⊕		+40 763,37 +42 202,56

**Beacon Description:**  
All 12mm iron peg



S.G. No.  
820/2019  
Approved  
*[Signature]*  
for Surveyor-General  
2019.05.13

FOR SUBDIVISION OF THIS  
PROPERTY VIDE GENERAL  
PLAN.....824/2019



Scale 1: 2500

The figure A B C D E F G H J K L M N P Q R S T U  
represents 2,8841 Hectares of land, being

**Erf 706, portion of Erf 184 Rivergate**

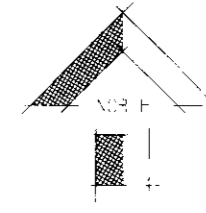
Situate in the City of Cape Town Province of the Western Cape  
Administrative District of Cape  
Surveyed in November 2008 - March 2019  
by me *R. C. Abrahamse* (PLS 0002) Professional Land Surveyor

APPROVED SUBJECT TO SIMUL-  
TANEOUS REGISTRATION OF  
DIAGRAM.....GP.824/2019  
BEING.....

This diagram is annexed to No. dated i.f.o.	The original diagram is SG. No. 2809/2017 annexed to C.C.T. 2018 - - 3512	File No. Cape 224 S.R. No. 513/2019 Comp. BH-8AAC(6201)
Registrar of Deeds		LPI C0160083

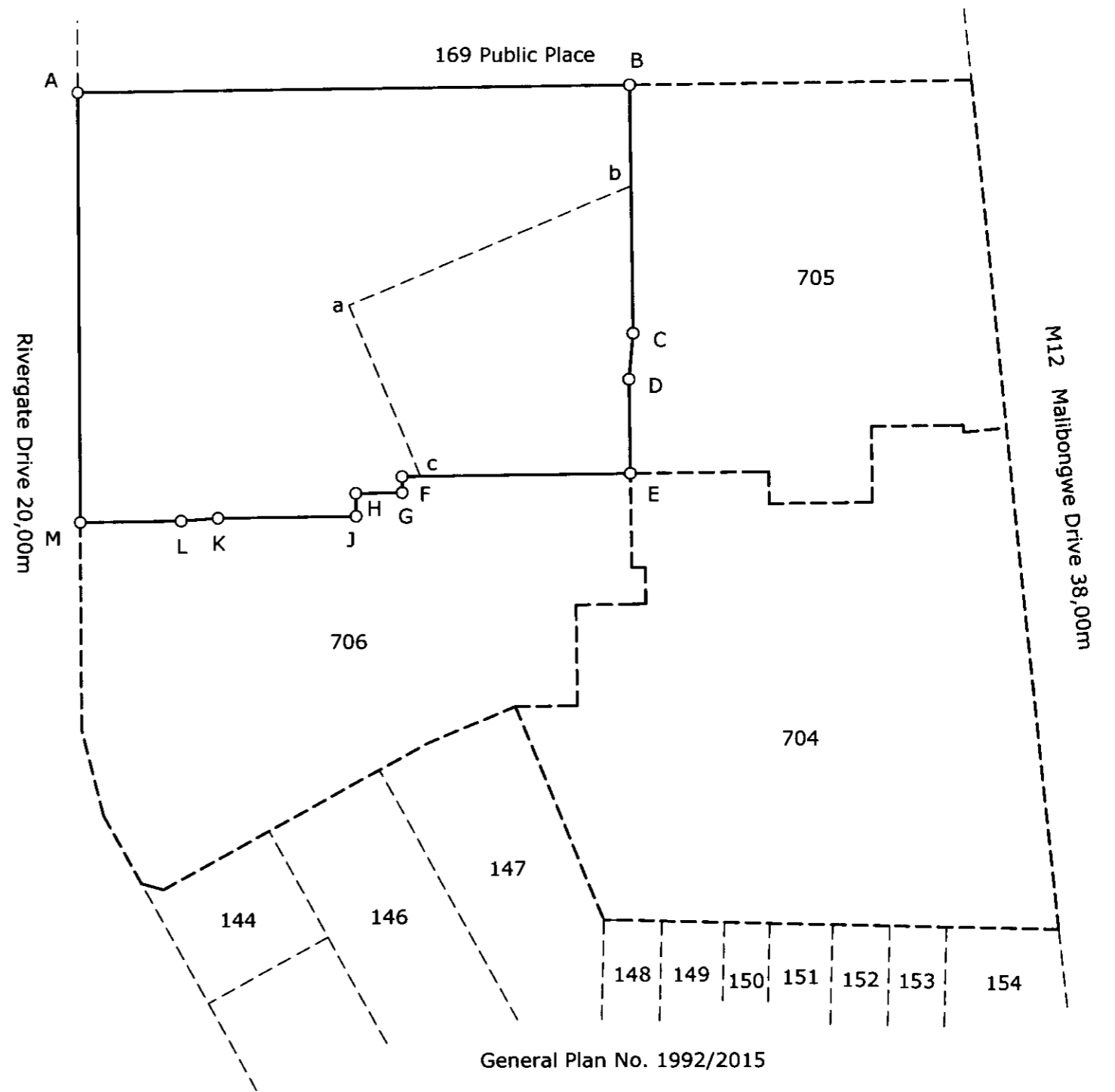
SIDES Metres	ANGLES OF DIRECTION	CO-ORDINATES Y System WG 19° X		
			Y	X
	Constants		0,00	3 700 000,00
AB	241,59	269 17 40	A +43 494,04	+40 448,55
BC	108,00	359 17 40	B +43 252,47	+40 445,57
CD	20,10	5 00 20	C +43 251,14	+40 553,57
DE	41,00	359 17 40	D +43 252,90	+40 573,59
EF	99,98	89 17 40	E +43 252,39	+40 614,59
FG	7,00	359 17 40	F +43 352,36	+40 615,82
GH	20,00	89 17 40	G +43 352,27	+40 622,82
HJ	10,00	359 17 40	H +43 372,27	+40 623,06
JK	60,90	89 17 40	J +43 372,15	+40 633,06
KL	16,03	85 43 10	K +43 433,05	+40 633,81
LM	44,20	89 17 40	L +43 449,03	+40 635,01
MA	187,00	179 45 20	M +43 493,23	+40 635,55
		10 DC7	⊕ +41 568,51	+42 117,46
		11 DC7	⊕ +40 763,37	+42 202,56

**Beacon Description:**  
All 12mm iron peg



S.G. No.  
821/2019  
Approved  
*[Signature]*  
for Surveyor-General  
2019.05.13

FOR SUBDIVISION OF THIS  
PROPERTY VIDE GENERAL  
PLAN.....825/2019.....  
.....  
.....



Scale 1: 2500

The figure A B C D E F G H J K L M  
represents 4,3090 Hectares of land, being

**Erf 707, portion of Erf 184 Rivergate**

Situate in the City of Cape Town Province of the Western Cape  
Administrative District of Cape  
Surveyed in November 2008 - March 2019  
by me *R. C. Abrahamse* R. C. Abrahamse (PLS 0002) Professional Land Surveyor

This diagram is annexed to No. dated i.f.o.	The original diagram is SG. No. 2809/2017 annexed to C.C.T. 2018 - - 3512	File No. Cape 224 S.R. No. 513/2019 Comp. BH-8AAC(6201)
Registrar of Deeds		LPI C0160083

APPROVED SUBJECT TO SIMULTANEOUS REGISTRATION OF DIAGRAM.....825/2019..... BEING.....

MAIN FIGURE ERF 704			
CO-ORDINATES			
SIDES	METRES	ANGLES OF DIRECTION	Y System: WG 19° X
AB	60.90	Constant	0.00
BC	14.00	269 17 40	3 700 000.00
CD	45.00	269 17 40	
DE	33.00	179 17 40	
EF	40.42	269 17 40	
FG	3.15	354 09 20	
GH	19.00	264 09 20	
HJ	220.20	354 09 20	
JK	190.36	91 18 20	
KL	101.01	157 29 50	
LM	27.37	269 17 40	
MN	44.00	179 17 40	
NP	30.00	269 17 40	
PQ	16.00	179 17 40	
QR	5.88	89 17 40	
RA	40.97	179 17 40	

MAIN FIGURE ERF 150			
CO-ORDINATES			
SIDES	METRES	ANGLES OF DIRECTION	Y System: WG 19° X
ST	20.00	Constant	0.00
TU	35.97	271 18 20	3 700 000.00
UV	12.73	316 30 10	
VW	38.00	91 30 10	
WX	12.73	226 30 10	
XS	35.90	181 30 10	

BLOCK CORNERS		
A1	+43 211.50	+40 614.08
A2	+43 211.08	+40 648.06
A3	+43 217.89	+40 655.14
B1	+43 103.01	+40 596.62
B2	+43 092.88	+40 695.59
B3	+43 099.17	+40 702.64
B4	+43 139.40	+40 703.14
B5	+43 139.43	+40 700.14
B6	+43 145.43	+40 700.21
B7	+43 145.39	+40 703.21
B8	+43 153.11	+40 703.68
B9	+43 190.02	+40 696.76
B10	+43 189.82	+40 681.30
B11	+43 181.06	+40 647.61
C1	+43 183.31	+40 718.68
C2	+43 074.47	+40 718.34
C3	+43 180.41	+40 725.77
D1	+43 219.68	+40 671.16
D2	+43 209.81	+40 681.04
D3	+43 210.73	+40 752.06
D4	+43 213.73	+40 752.02
D5	+43 215.81	+40 756.02
D6	+43 210.81	+40 758.06
E1	+43 211.94	+40 827.89
E2	+43 209.45	+40 827.96
E3	+43 209.66	+40 836.10
E4	+43 212.16	+40 836.04

TOWN SURVEY MARKS		
10 DC7 @	+41 566.51	+42 117.46
11 DC7 @	+40 783.37	+42 202.56

AREAS		
ERF NUMBER	SQUARE METRES	BEACONS PLACED VIDE S. R.
200	1651	
201	3365	
202	1473	
203	1580	
204	2160	
205	2241	
206	2461	
207	8920	
208	1320	
209	1515	
210	3346	
211	1923	
212	1556	
213 Public Street	5243	
214	20	
215 Public Street	960	

Main Figure Beacon Description:  
All beacons are 12 mm iron peg

Servitude Notes  
Erf 201 is subject to a servitude 3.00m wide as shown

**CDR**

( RIVERGATE ALLOTMENT AREA )

**GENERAL PLAN No. 822/2019**

OF SUBDIVISIONS OF  
1. THE FIGURE A B C D E F G H J K L M N P Q R REPRESENTING ERF 704 RIVERGATE  
VIDE DGM. No. 818/2019 ANNEXED TO D/T  
COMPRISING 13 ERVEN NUMBERED 200 - 212  
1 PUBLIC STREET NUMBERED 213

Act 70/70  
NOT APPLICABLE

2. THE FIGURE S T U V W X REPRESENTING ERF 150 RIVERGATE  
VIDE DUMMY DGM. No. 858/2019 ANNEXED TO D/T  
COMPRISING 1 ERF NUMBERED 214  
1 PUBLIC STREET NUMBERED 215

SITUATE IN THE CITY OF CAPE TOWN  
ADMINISTRATIVE DISTRICT OF CAPE  
PROVINCE OF WESTERN CAPE

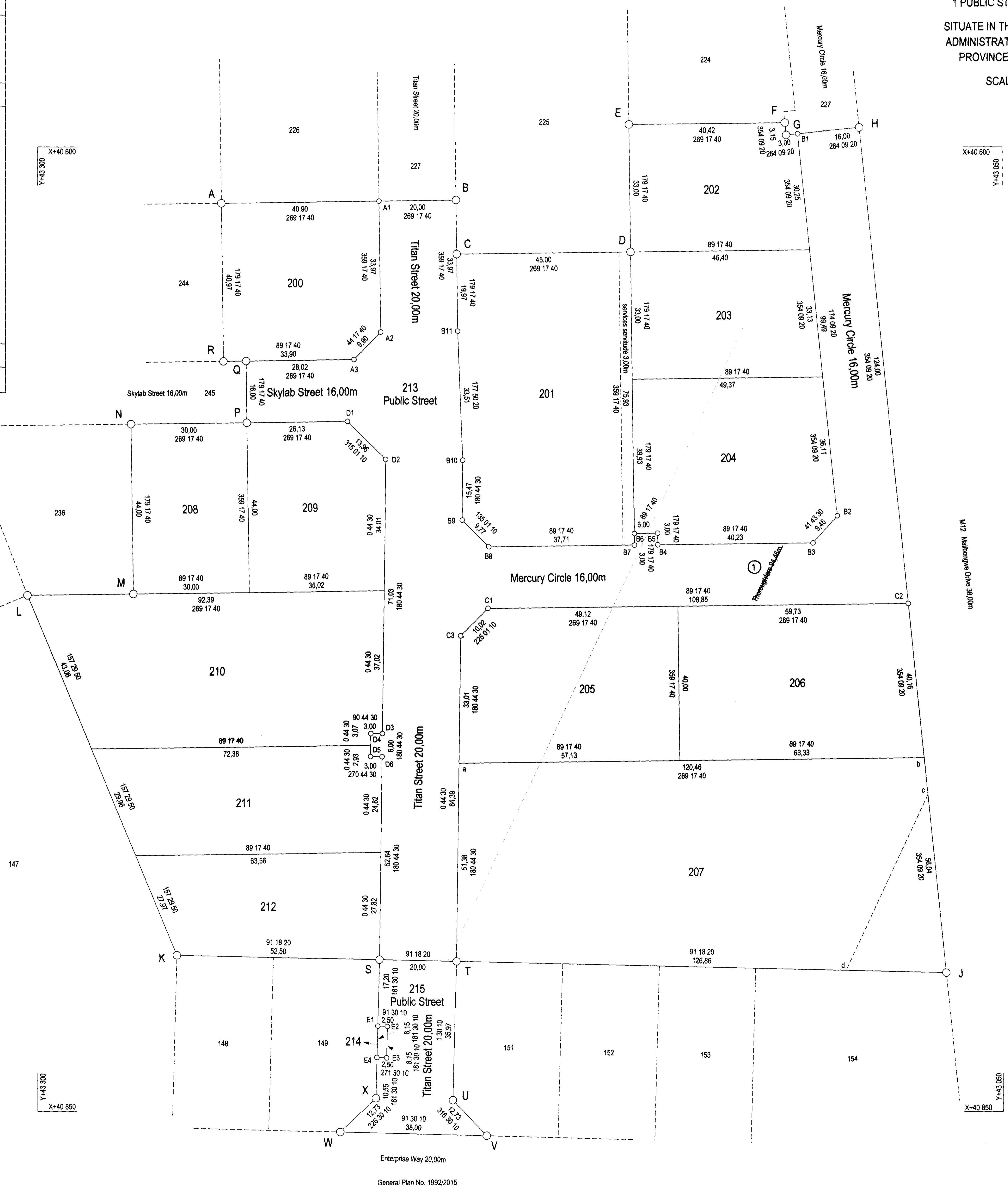
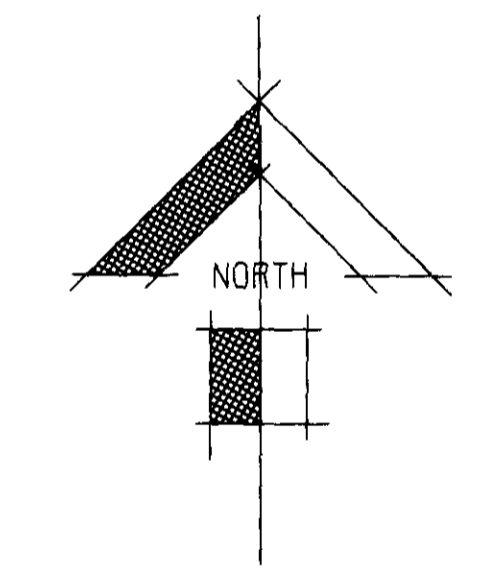
SCALE 1 : 500

SURVEYED IN NOVEMBER 2008 - MARCH 2019  
BY ME

*R. C. Abrahamse*  
R. C. ABRAHAMSE  
PROFESSIONAL LAND SURVEYOR  
P.L.S. No. 0002

ENDORSEMENTS				
NO	AMENDMENT	ADDITION	AUTHORITY	INTD DATE
1	THOROUGHFARE DELETED		Court Order Case Number 8310/19 File: Cape 224 V4 Page 36	02-07-19

S. G. OFFICE NOTES



S. G. FILE Cape 224 V.3  
S. G. S.R. 513/2019  
COMPILATION BH-BAAC(6201)

LPI C0160083

822/2019

MAIN FIGURE			
CO-ORDINATES			
SIDES	METRES	ANGLES OF DIRECTION	Y System: WG 19° X
AB	108.47	Constant	0.00
BC	1.30	289 17 40	3 700 000.00
CD	0.52	337 30 40	
DE	40.04	289 17 40	
EF	152.05	354 09 20	
FG	19.00	84 08 20	
GH	3.15	174 09 20	
HJ	40.42	89 17 40	
JK	33.00	359 17 40	
KL	45.00	89 17 40	
LM	14.00	179 17 40	
MN	60.90	89 17 40	
NP	41.00	179 17 40	
PQ	20.10	185 00 20	
QA	108.00	179 17 40	

BLOCK CORNERS			
A1	+43 252.27	+40 461.57	
A2	+43 218.38	+40 461.16	
A3	+43 211.29	+40 468.07	
A4	+43 210.57	+40 527.06	
A5	+43 213.57	+40 527.10	
A6	+43 213.49	+40 533.10	
A7	+43 210.49	+40 533.06	
A8	+43 210.33	+40 540.06	
A9	+43 217.25	+40 553.15	
B1	+43 186.38	+40 460.79	
B2	+43 123.00	+40 460.01	
B3	+43 116.19	+40 467.87	
B4	+43 103.62	+40 590.85	
B5	+43 106.81	+40 590.96	
B6	+43 191.94	+40 571.84	
B7	+43 194.31	+40 547.87	
B8	+43 195.29	+40 467.87	
C1	+43 252.86	+40 576.59	
C2	+43 246.66	+40 576.52	
C3	+43 246.90	+40 573.52	
C4	+43 219.00	+40 573.17	
C5	+43 211.91	+40 580.09	
C6	+43 211.50	+40 614.08	

TOWN SURVEY MARKS			
10 DCT @	+41 568.51	+42 117.46	
11 DCT @	+40 763.37	+42 202.56	

Inset 1 : no scale

AREAS		
ERF NUMBER	SQUARE METRES	BEACONS PLACED VIDE S. R.
216	1039	
217	818	
218	818	
219	1021	
220	3454	
221	1436	
222	1101	
223	1182	
224	1254	
225	4241	
226	1834	
227 Public Street	8250	

Main Figure Beacon Description:  
All beacons are 12 mm iron peg

Servitude Notes  
The figure B C D represents an electric power line servitude area vide General Plan No. 1189/2017

**CDR**

( RIVERGATE ALLOTMENT AREA )

**GENERAL PLAN No. 823/2019**  
OF  
**SUBDIVISIONS OF ERF 705 RIVERGATE**  
VIDE DGM. No. 819/2019 ANNEXED TO D/T  
COMPRISING 11 ERVEN NUMBERED 216 - 226  
1 PUBLIC STREET NUMBERED 227

SITUATE IN THE CITY OF CAPE TOWN  
ADMINISTRATIVE DISTRICT OF CAPE  
PROVINCE OF WESTERN CAPE

SCALE 1 : 500

S.G. No. 823/2019

APPROVED  
*[Signature]*  
for SURVEYOR - GENERAL  
2019-05-13

APPROVED IN TERMS OF SECTION 98  
OF MUNICIPAL BY-LAW OF ACT 3/2014  
REFERENCE : Case ID: 70414807  
DATE: 05-04-2019

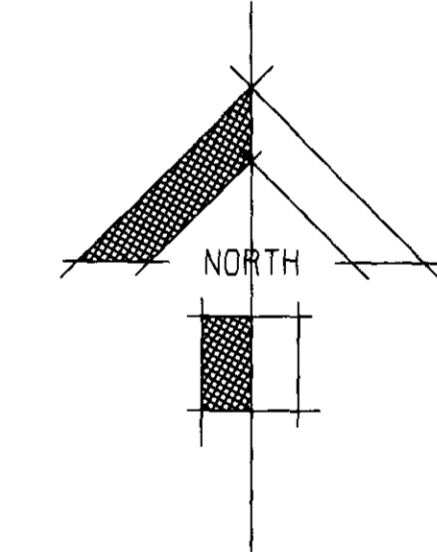
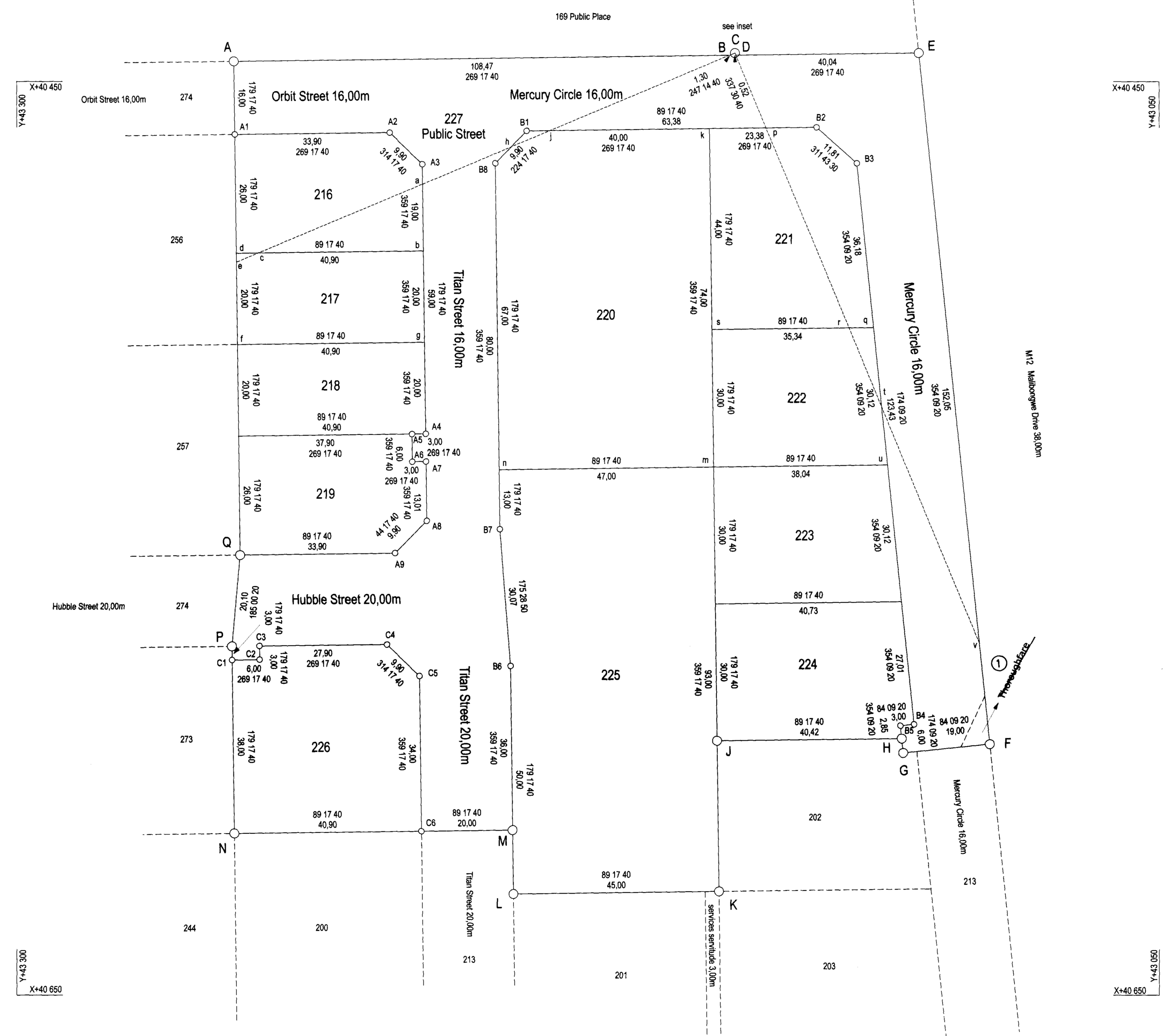
EXEMPT FROM PROVISIONS OF ACT  
70 OF 1970  
SECTION 1(a)

SURVEYED IN NOVEMBER 2008 - MARCH 2019  
BY ME

*[Signature]*  
R. C. ABRAHAMSE  
PROFESSIONAL LAND SURVEYOR  
P.L.S. No 0002

Act 70/70  
NOT APPLICABLE

ENDORSEMENTS					
NO	AMENDMENT	ADDITION	AUTHORITY	INTD	DATE
①	THOROUGHFARE DELETED		Court Order Case Number 8230/19 File: Cape 224 V4 Page 36		04-07-19



S. G. OFFICE NOTES

823/2019

MAIN FIGURE				AREAS			
SIDES	METRES	ANGLES OF DIRECTION	CO-ORDINATES		ERF NUMBER	SQUARE METRES	BEACONS PLACED VIDE S. R.
			Y	X			
AB	44.20	Constant	0.00	3 700 000.00	228	1285	
BC	16.03	269 17.40	+43 493.23	+40 635.55	229	1319	
CD	60.90	269 17.40	+43 449.03	+40 635.01	230	2338	
DE	10.00	179 17.40	+43 433.05	+40 633.81	231	2846	
EF	20.00	269 17.40	+43 372.15	+40 633.06	232	1410	
FG	7.00	179 17.40	+43 352.27	+40 622.82	233	1410	
GH	99.98	269 17.40	+43 352.36	+40 615.82	234	1536	
HJ	40.97	359 17.40	+43 292.39	+40 614.59	235	1466	
JK	5.88	269 17.40	+43 251.89	+40 655.56	236	1567	
KL	16.00	359 17.40	+43 246.01	+40 655.49	237	1628	
LM	30.00	89 17.40	+43 245.81	+40 671.46	238	1558	
MN	44.00	359 17.40	+43 275.81	+40 671.85	239	891	
NP	27.37	89 17.40	+43 275.27	+40 715.85	240	970	
PQ	41.84	57 30.20	+43 302.64	+40 716.19	241	835	
QR	132.32	61 08 30	+43 341.29	+40 732.19	242	819	
RS	9.90	106 08 30	+43 457.18	+40 796.06	243	819	
ST	34.01	151 08 30	+43 486.69	+40 793.21	244	819	
TU	38.86	159 08 30	+43 483.11	+40 763.53	245	819	
UA	90.36	179 45 20	+43 492.85	+40 725.91	246	819	

Main Figure Beacon Description:  
All beacons are 12 mm iron peg

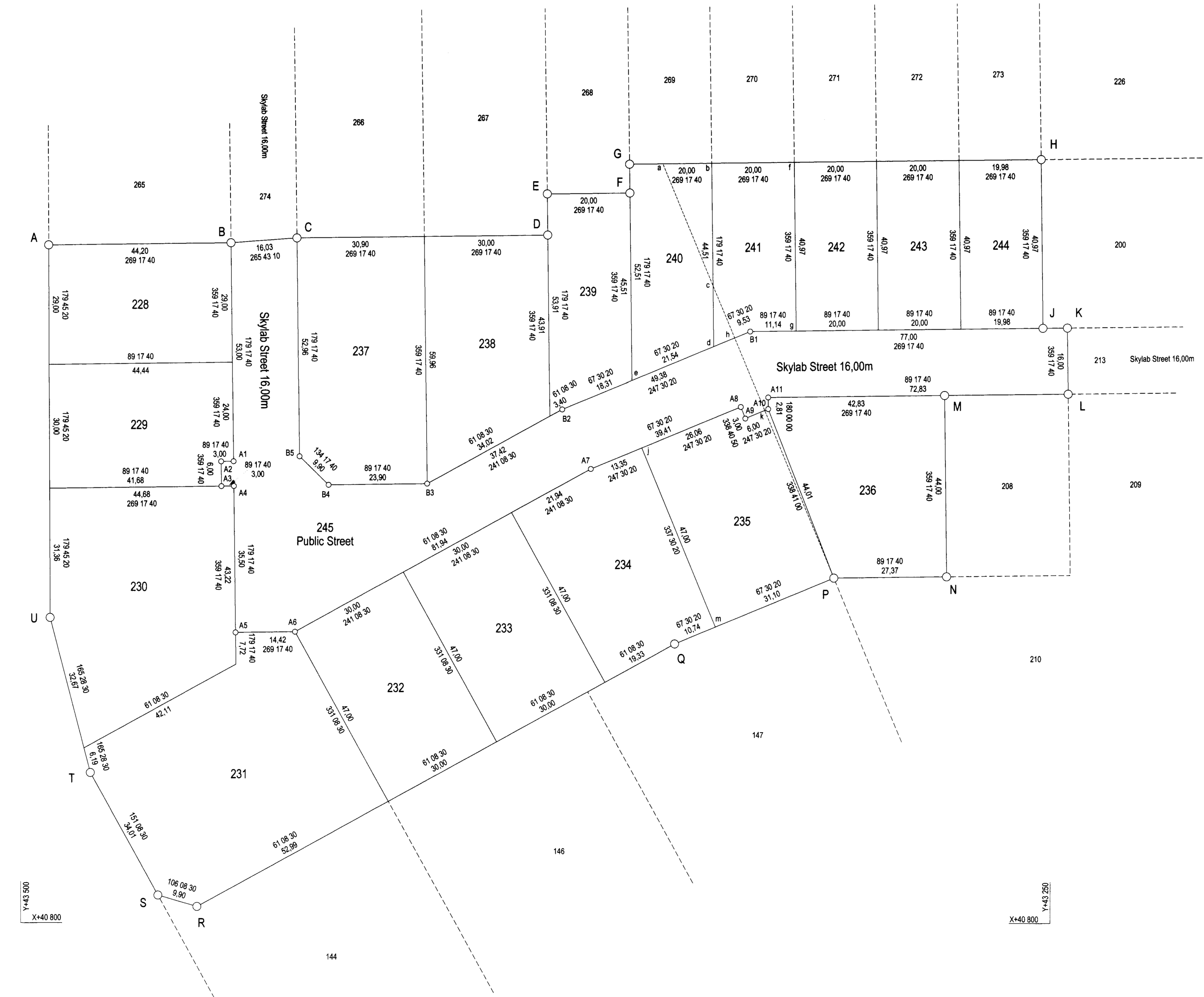
BLOCK CORNERS		
A1	+43 448.38	+40 688.00
A2	+43 451.38	+40 688.04
A3	+43 451.31	+40 694.04
A4	+43 448.31	+40 694.00
A5	+43 447.87	+40 729.50
A6	+43 433.45	+40 729.32
A7	+43 361.89	+40 699.77
A8	+43 325.27	+40 674.66
A9	+43 324.18	+40 677.48
A10	+43 318.84	+40 675.19
A11	+43 318.94	+40 672.38
B1	+43 323.01	+40 656.43
B2	+43 368.83	+40 675.33
B3	+43 401.41	+40 693.39
B4	+43 425.31	+40 693.68
B5	+43 432.39	+40 686.77

TOWN SURVEY MARKS		
10 DC7 ⊕	+41 568.51	+42 117.46
11 DC7 ⊕	+40 763.37	+42 202.56

X=40 550  
Y=43 500

X=40 550  
Y=43 250



X=40 800  
Y=43 500

X=40 800  
Y=43 250

CDR

( RIVERGATE ALLOTMENT AREA )  
**GENERAL PLAN No. 824/2019**  
OF  
SUBDIVISIONS OF ERF 706 RIVERGATE  
VIDE DGM. No. 820/2019 ANNEXED TO D/T  
COMPRISING 17 ERVEN NUMBERED 228 - 244  
1 PUBLIC STREET NUMBERED 245  
SITUATE IN THE CITY OF CAPE TOWN  
ADMINISTRATIVE DISTRICT OF CAPE  
PROVINCE OF WESTERN CAPE  
SCALE 1 : 500

S.G. No. 824/2019

APPROVED  
*[Signature]*  
for SURVEYOR - GENERAL  
2019-05-13

APPROVED IN TERMS OF SECTION 98  
OF MUNICIPAL BY-LAW OF ACT 3/2014  
REFERENCE Case ID: 70414807  
DATE 05-04-2019

Act 70/70  
NOT APPLICABLE

EXEMPT FROM PROVISIONS OF ACT  
70 OF 1970  
SECTION 1(a)

SURVEYED IN NOVEMBER 2008 - MARCH 2019  
BY ME

*[Signature]*  
R. C. ABRAHAMSE  
PROFESSIONAL LAND SURVEYOR  
P.L.S. No. 0002

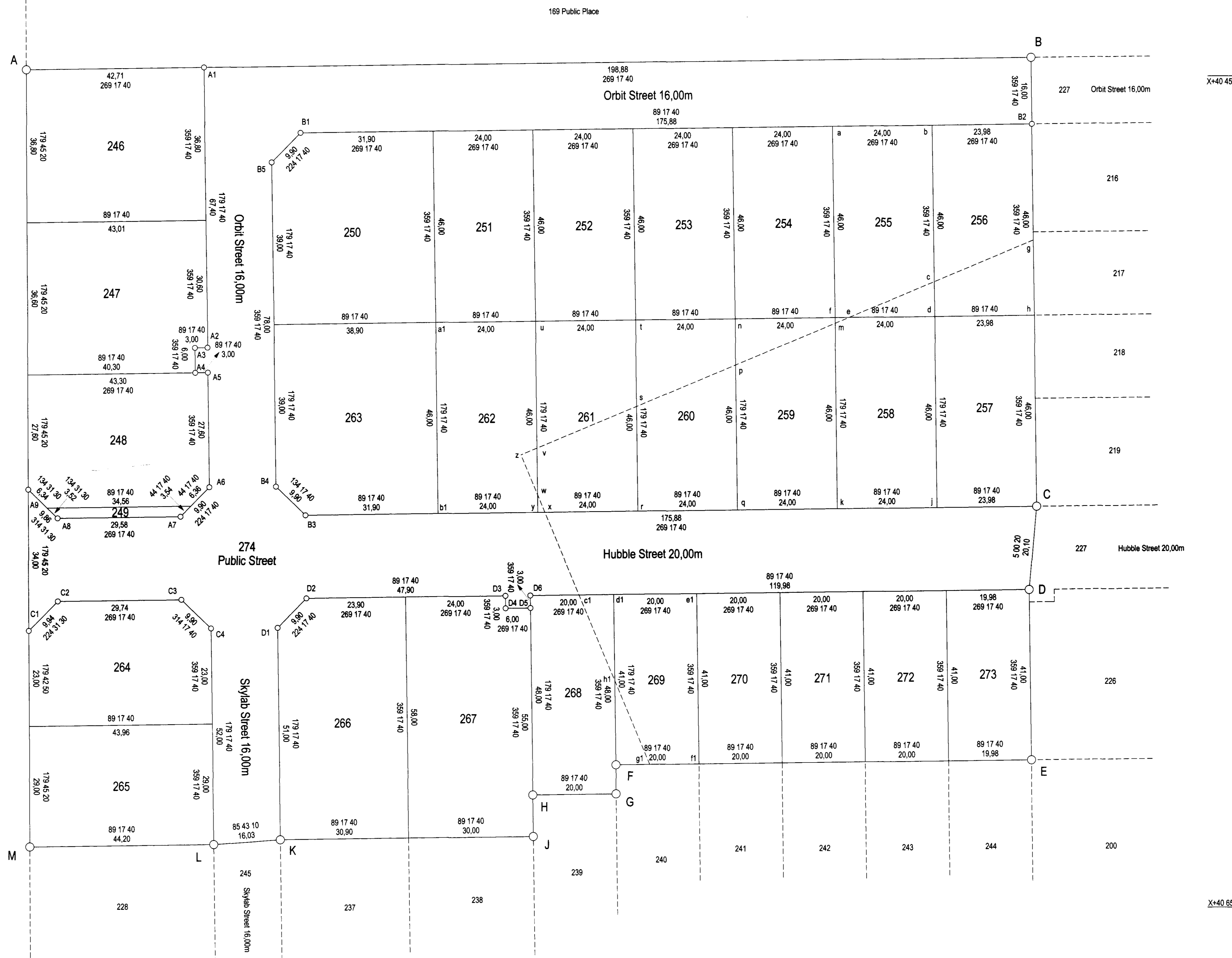
ENDORSEMENTS

NO	AMENDMENT	ADDITION	AUTHORITY	INTD	DATE

S. G. OFFICE NOTES

MAIN FIGURE			CO-ORDINATES		ERF NUMBER		SQUARE METRES		BEACONS PLACED VIDE S. R.	
SIDES	METRES	ANGLES OF DIRECTION	Y	X						
AB	241.59	Constant	0.00	3 700 000.00	246	1577				
BC	108.00	269 17 40	+43 404.04	+40 448.55	246	1581				
CD	20.10	5 00 20	+43 252.47	+40 345.57	246	1574				
DE	41.00	359 17 40	+43 251.14	+40 553.57	250	1785				
EF	39.98	89 17 40	+43 252.90	+40 573.59	251	1104				
FG	7.00	359 17 40	+43 252.39	+40 614.59	252	1104				
GH	20.00	89 17 40	+43 352.27	+40 822.82	253	1104				
HJ	10.00	359 17 40	+43 352.27	+40 823.06	254	1104				
JK	60.90	89 17 40	+43 372.15	+40 833.06	256	1103				
KL	16.03	85 43 10	+43 433.05	+40 833.81	257	1103				
LM	44.20	89 17 40	+43 440.03	+40 835.01	258	1104				
MA	197.00	179 45 20	+43 493.23	+40 835.55	259	1104				
BLOCK CORNERS										
A1	+43 451.33	+40 448.02								
A2	+43 450.90	+40 515.42								
A3	+43 453.50	+40 515.45								
A4	+43 453.43	+40 521.45								
A5	+43 450.43	+40 521.42								
A6	+43 450.09	+40 549.01								
A7	+43 457.00	+40 556.10								
A8	+43 456.58	+40 556.46								
A9	+43 493.61	+40 549.55								
B1	+43 428.14	+40 463.74								
B2	+43 252.27	+40 461.57								
B3	+43 427.01	+40 555.73								
B4	+43 434.09	+40 548.82								
B5	+43 435.05	+40 470.22								
C1	+43 493.46	+40 563.55								
C2	+43 486.49	+40 576.46								
C3	+43 456.76	+40 576.10								
C4	+43 440.67	+40 568.01								
D1	+43 433.67	+40 582.81								
D2	+43 428.76	+40 575.73								
D3	+43 378.86	+40 575.14								
D4	+43 378.83	+40 578.14								
D5	+43 372.83	+40 578.07								
D6	+43 372.86	+40 575.07								
TOWN SURVEY MARKS										
10 DCT ②	+41 568.51	+42 117.46								
11 DCT ②	+40 753.37	+42 202.56								

Main Figure Beacon Description:  
All beacons are 12 mm iron peg



CDR

( RIVERGATE ALLOTMENT AREA )

GENERAL PLAN No. 825/2019

OF

SUBDIVISIONS OF ERF 707 RIVERGATE

VIDE DGM. No. 821/2019 ANNEXED TO D/T

COMPRISING 28 ERVEN NUMBERED 246 - 273

1 PUBLIC STREET NUMBERED 274

SITUATE IN THE CITY OF CAPE TOWN  
ADMINISTRATIVE DISTRICT OF CAPE  
PROVINCE OF WESTERN CAPE

SCALE 1 : 500

S.G. No. 825/2019

APPROVED

for SURVEYOR - GENERAL  
2019.05.13

APPROVED IN TERMS OF SECTION 98  
OF MUNICIPAL BY-LAW OF ACT 3/2014  
REFERENCE Case ID: 70414807  
DATE 05-04-2019

EXEMPT FROM PROVISIONS OF ACT  
70 OF 1970  
SECTION 1(a)

Act 70/70  
NOT APPLICABLE

SURVEYED IN NOVEMBER 2008 - MARCH 2019  
BY ME

R. C. ABRAHAMSE  
PROFESSIONAL LAND SURVEYOR  
P.L.S. No 0002

ENDORSEMENTS

NO	AMENDMENT	ADDITION	AUTHORITY	INTD	DATE

S. G. OFFICE NOTES

S. G. FILE Cape 224  
S. G. S. R. 513/2019  
COMPILATION BH-8AAC(6201)

LPI C0160083