

SERVIDUTE DATA			CO-ORDINATES		
SIDES	METRES	ANGLES OF DIRECTION	Y System: WG 19° X		
s1 s2	48,32	Constant 3 15 00	s1	0,00 +43 140,44	3 700 000,00 +41 120,51
s1 A44	71,34	264 53 20	s2	+43 143,18	+41 168,76
			A44	+43 069,39	+41 114,16

BLOCK CORNERS		
A116	+43 204,78	+41 201,91
A117	+43 163,79	+41 204,25
A118	+43 138,32	+41 197,32
A119	+43 137,48	+41 182,58
A120	+43 146,70	+41 160,22

AREAS		
ERF NUMBER	SQUARE METRES	BEACONS PLACED VIDE S.R.
159	2,8636 Ha	
160 Public Street	768	

SERVITUDE NOTES
 1 ERF 159 IS SUBJECT TO AN ELECTRICAL SERVITUDE 4,00m WIDE AS SHOWN
 2 ERF 159 IS SUBJECT TO A SERVICES SERVITUDE 4,00m WIDE AS SHOWN
 3 ERF 159 IS SUBJECT TO A SERVICES SERVITUDE 3,00m WIDE AS SHOWN
 4 THE FIGURE x y z A48 REPRESENTS A PIPELINE SERVITUDE AREA VIDE DGM No. 3170/2010 ANNEXED TO D/S

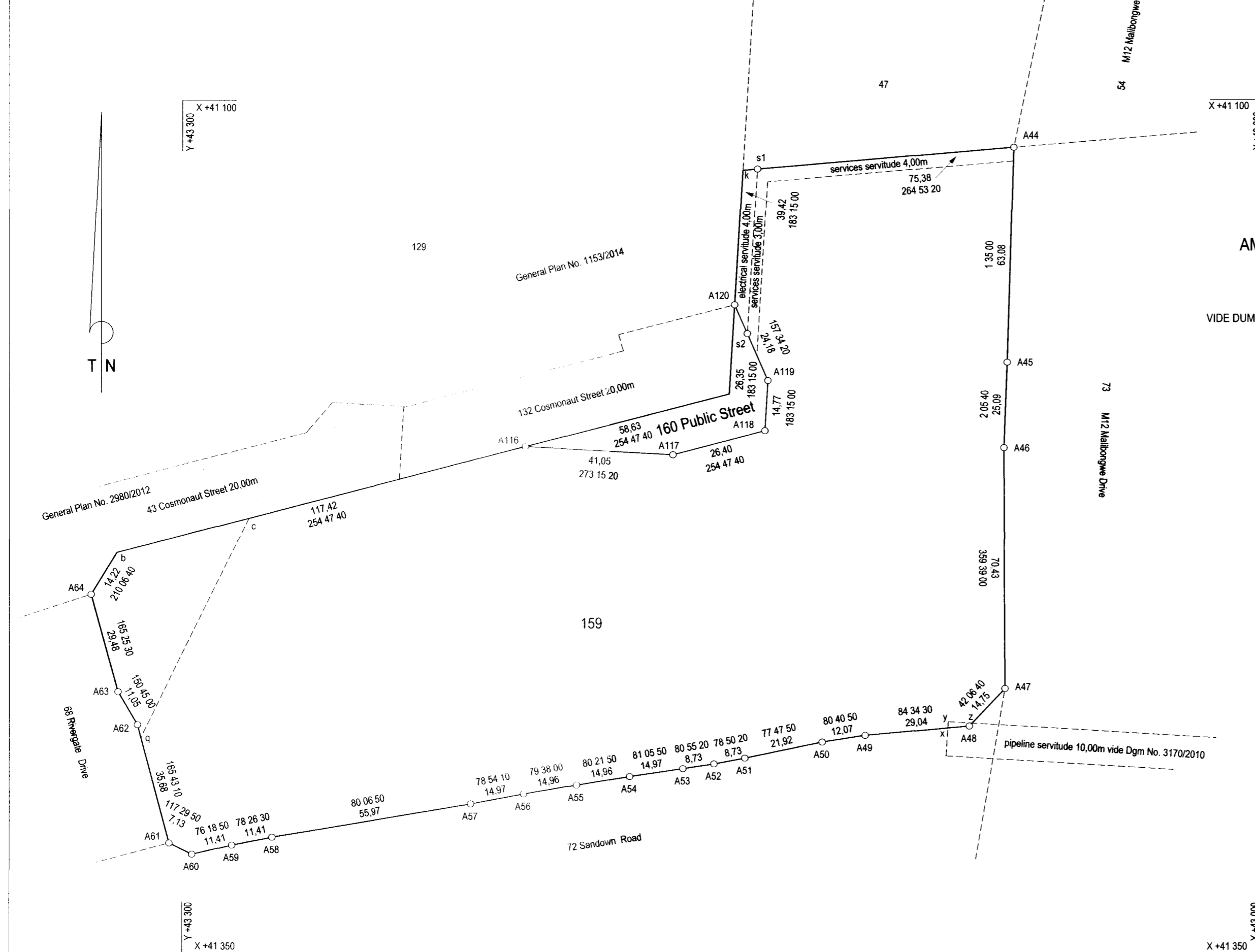
S.G. No. 2436/2014

APPROVED
D.L. Nel
 for SURVEYOR - GENERAL
 2014-11-06

APPROVED IN TERMS OF SECTION 30(1) OF ORDINANCE 15/1985
 REFERENCE : Case number: 70121485
 DATE : 2014-07-24

EXEMPT FROM THE PROVISIONS OF ACT 70 OF 1970 SECTION 1(a)

ENDORSEMENTS					
NO	AMENDMENT	ADDITION	AUTHORITY	INTD	DATE



CDR

(RIVERGATE ALLOTMENT AREA)

GENERAL PLAN No. 2436/2014
 AMENDING GENERAL PLAN No. 2978/2012
 OF
 SUBDIVISIONS OF ERF 1 RIVERGATE
 VIDE DUMMY DGM. No. 98/2013 ANNEXED TO C.R.T. 2014 - - 45090

COMPRISING 1 ERF NUMBERED 159
 AND 1 PUBLIC STREET NUMBERED 160
 WHICH SUBSTITUTES ERF 61
 AS SHOWN ON GENERAL PLAN No. 2978/2012
 SITUATE IN THE CITY OF CAPE TOWN
 ADMINISTRATIVE DISTRICT OF CAPE
 PROVINCE OF WESTERN CAPE
 SCALE 1 : 750

SURVEYED IN NOVEMBER 2008 - DECEMBER 2012
 BY ME
Abrahamse
 R. C. ABRAHAMSE
 PROFESSIONAL LAND SURVEYOR
 P.L.S. No. 0002

S. G. OFFICE NOTES

S. G. FILE No. Cape 224 (Vol.2)
 S. G. S.R. 1230/2014
 COMPILATION BH-8AAC(6201)
 LPI C0160083

C